

Man accused of girlfriend's murder faces murder charges

... was sleeping in a room with her two small children, one of whom was Littlewolf's child. Littlewolf shot Dunn in the head, then went to another bedroom where an adult couple had been sleeping and pointed the shotgun at them. He told them to take care of the children, ages 3 and 6, and left.

The indictment also charges Littlewolf with second-degree intentional murder, three counts of first-degree burglary, and two counts of second-degree assault with a dangerous weapon, according to the Cass County Attorney's Office.

Littlewolf made his first appearance on the indictment in Cass County District Court on Friday. Bail remains at \$750,000 or \$500,000 with conditions. He is scheduled to appear again in court on Aug. 31.

Man from township recovered

... parked inside the township fire hall, northwest of Tower. A St. Louis County sheriff's deputy soon spotted the truck in the city of Cook. The driver, a 25-year-old man from Gheen, Minn., was arrested and faces likely charges of motor vehicle theft and intoxicated driving. Other charges also are pending.

Friday on the detailed U.S. figures, Walker spokesman Cullen Werwie said, "While Wisconsin fared well compared to numbers nationally, we still have a lot of work to do in Wisconsin."

The governor had attributed much of Wisconsin's job growth to an increased focus on the state's tourism industry. That led to questions of whether the jobs were seasonal and would disappear in several months.

Walker replied that some were summer jobs but that an unspecified number would carry over into subsequent months, as summer tourists who visited lakes and other attractions gave way to visitors who returned to hunt in the fall or engage in snow sports in the winter.

One economist was

WhiteSide

Continued from Page D1

"There's a tremendous sadness from the loss," Whiteside said. "Felt by me, family and friends."

After his wife's death, Whiteside said, he felt a need to do something constructive with his grief.

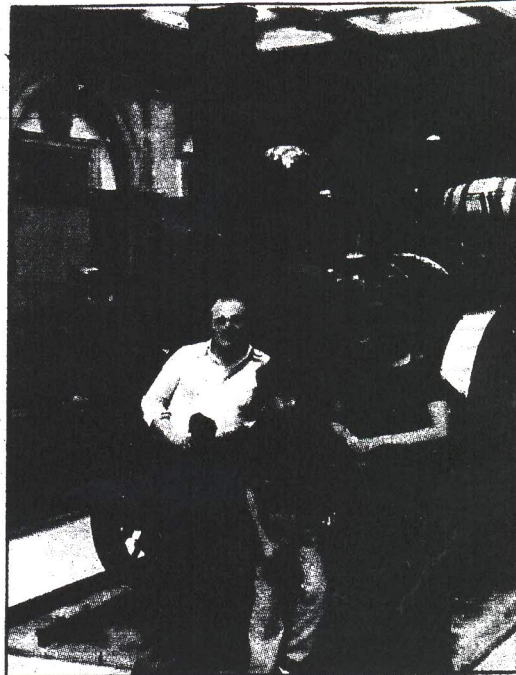
"A lot of people have been touched by this," he said. "Once Gildi committed suicide, people started coming out of the woodwork wanting to talk with me about their depression."

CORE executive director Beth Meyers of Bayfield said Mel Whiteside approached her at the funeral with the idea for the Gildi Project. Within days of the memorial service, Meyers said, the CORE board of directors met and decided to create the project.

"The goal (of the Gildi Project) is to have a healthier senior population in the Chequamegon Bay area by reducing seniors who suffer in silence with mental illness," Meyers said. "We want to make (depression) a non-taboo issue, where people can talk about it and get the services they need."

In early July, the Gildi Project received a \$4,000 grant from the Apostle Island Area Community Fund. The money will be used to coordinate the work of volunteers helping older people suffering from depression and isolation.

Isolation can pose an additional challenge for older people who live in rural areas, said Gildi Project Chairwoman Kathryn Jensen. There could be hundreds of people living alone in Bayfield County, she said. While the Gildi Project focuses on people living alone, Meyers said,



Gildi Whiteside is shown in this undated photo with her cousin Karl Haselmeyer and her son, Jeff, in front of one of her grandfather's trains in a museum in Munich, Germany. Whiteside's grandfather ran one of the first trains in Germany, according to Gildi's husband, Mel Whiteside. Photo courtesy of Mel Whiteside

isolation also can touch socially active seniors like Gildi Whiteside.

Jensen said senior citizens are more likely to end their own lives than any other age group.

"Seniors are experienced. They know what they want to do," she said. "That's why we're so eager to develop this community-based program and get them help."

Of every 100,000 people 65 and older, 14.3 percent died by suicide in 2007 — compared to 11.3 percent per 100,000 in the general population, according to the National Institute of

Mental Health

"People suffer in silence with mental illness," Meyers said. "We don't know who's sitting at home crippled by this disease."

So far CORE has trained 60 volunteers for the Gildi project. Their goal is to train 140 more volunteers to identify depression in senior citizens and help them find resources to overcome it.

Meyers says family and friends can help older people with depression by questioning them about it, probing for answers, and referring them to services.

University of Wisconsin-Madison, said jobs in tourism-related industries tend to last only through the summer. The jobs also tend to come with low wages, he added.

"In general these are not high-quality jobs," he said. "These are not the year-round, benefit-rich jobs that I think we need to improve the middle class in this state."

Data provided by the U.S. Bureau of Labor Statistics show that the average hourly wage in Wisconsin's leisure and hospitality industry has ranged from about \$11 to \$12 since 2007. There were 254,100 jobs in that Wisconsin sector last month, 6,200 more than in the previous month and 3,300 more than in June of last year.

Tourism is a major part

about \$12.3 billion in spending last year, on items from camping in the wilderness up north to staying at posh hotels in downtown Milwaukee, according to a study released by the Wisconsin Tourism Department.

Also unclear was whether the new jobs reflected an increase in out-of-state travelers or simply represented Wisconsin residents who were trying to save money by staying in-state.

Either way, Marcouiller questioned the logic of trying to improve the economy by simply boosting tourism. He acknowledged that for

unemployed people desperate for work, lower-paying tourism jobs were better than none, but he said jobs in other industries would provide steady jobs and sustainable incomes.

"The bigger concern is, how do we create high-quality jobs that can sustain household needs?" he said. "I'm not discounting tourism, but it can't be looked at in isolation."

MARCUS THEATRES
CALL OR VISIT WEBSITE FOR SHOWTIMES
MARCUSTHEATRES.COM
Duluth 10 Theatre

ASHLIE SUOMALA
2011
Graduated from Gustavus Adolphus
Way to go girl!

DMV says cl

SCOTT BAUER
Associated Press

MADISON — Gov. Scott Walker's administration is working on finalizing a plan to close as many as 16 offices where people can obtain driver's licenses, in order to expand hours elsewhere and come into compliance with new requirements that voters show photo IDs at the polls.

One Democratic lawmaker said Friday it appeared the decisions were based on politics, with the department targeting offices for closure in Democratic areas and expanding hours for those in Republican districts.

A high-ranking state Department of Transportation official rejected that claim, saying the changes were based on economics, not politics.

Rep. Andy Jorgensen, D-Fort Atkinson, called on the DOT to reconsider its plans to close the Fort Atkinson DMV center. The department plans to expand by four hours a week the hours of a center about 30 minutes away in Watertown.

Jorgensen said he was concerned doing that would discourage people from Fort Atkinson from participating in elections.

"What the heck is going on here?" Jorgensen said. "Is politics at play here?"

Transportation Department executive assistant Reggie Newson denied that politics was behind the office closure plan, saying the

3RD AN
Ult
IN CON